

KESWICK ROAD, SW15

Approx. gross internal area 689 Sq Ft. / 64.0 Sq M

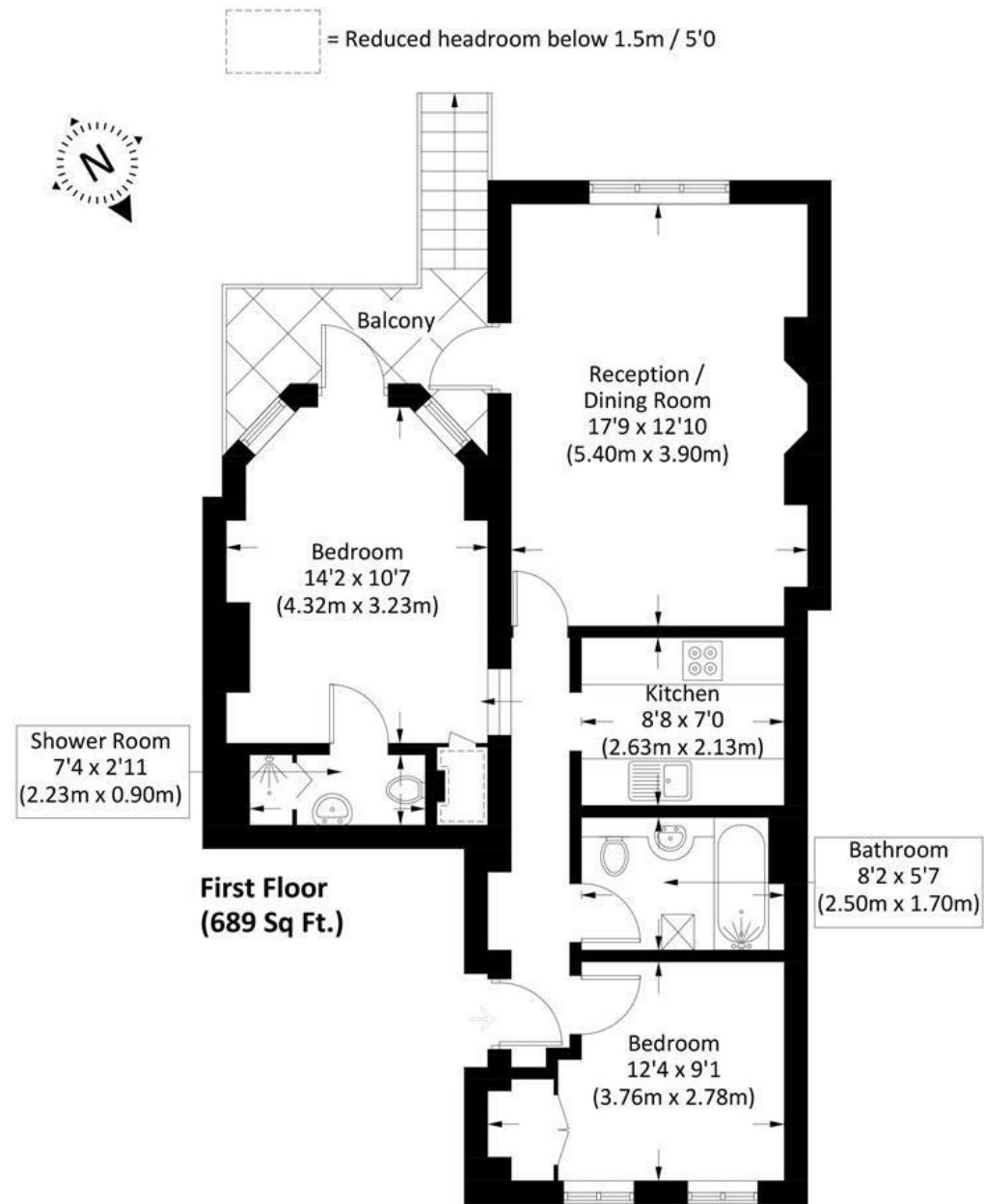


Illustration for identification purposes only, measurements are approximate, not to scale. Fourlabs.co © 2026 (ID1301485)

DISCLAIMER•These particulars are intended to give a fair and substantially correct overall description for the guidance of intending purchasers and do not constitute an offer or part of a contract. Prospective purchasers and/or lessees ought to seek their own professional advice.

•All descriptions, dimensions, areas, references to condition and necessary permissions for use and occupation and other details are given in good faith and are believed to be correct, but any intending purchasers should not rely on them as statements or representations of fact, but must satisfy themselves by inspection or otherwise as to the correctness of each of them.
•All measurements are approximate.



Keswick Road, Putney, SW15

A beautiful two double bedroom apartment on the first floor of this imposing period house in central Putney. Offered on a part furnished or unfurnished basis, the accommodation comprises an entrance hallway, bright reception room with wood floors and access to the balcony, a fully fitted galley style kitchen, two double bedrooms, an en suite shower room and further full bathroom. Keswick Road is a quiet residential road perfectly located for East Putney underground, Putney High Street and Wandsworth Town. Available now.



- FIRST FLOOR FLAT
- GALLEY STYLE KITCHEN
- EN SUITE SHOWER ROOM
- BALCONY
- EPC C
- RECEPTION ROOM
- TWO DOUBLE BEDROOMS
- FURTHER BATHROOM
- PRIME LOCATION
- COUNCIL TAX BAND E

Per Calendar Month
£2,250 Per Calendar Month

